

A rapid silica spin column-based method of RNA extraction from fruit trees for RT-PCR detection of viruses



Fan Yang^{a,b}, Guoping Wang^{a,c}, Wenxing Xu^{a,b}, Ni Hong^{a,b,c,*}

^a State Key Laboratory of Agricultural Microbiology, Huazhong Agricultural University, Wuhan, Hubei 430070, China

^b The Key Laboratory of Plant Pathology of Hubei Province, College of Plant Science and Technology, Huazhong Agricultural University, Wuhan, Hubei 430070, China

^c National Indoor Conservation Center of Virus-free Germplasm of Fruit Crops, Huazhong Agricultural University, Wuhan, Hubei 430070, China

ARTICLE INFO

Keywords:

Fruit tree
RNA isolation
RT-PCR
Silica column
Virus

ABSTRACT

Efficient recovery of high quality RNA is very important for successful RT-PCR detection of plant RNA viruses. High levels of polyphenols and polysaccharides in plant tissues can irreversibly bind to and/or co-precipitate with RNA, which influences RNA isolation. In this study, a silica spin column-based RNA isolation method was developed by using commercially available silica columns combined with the application of a tissue lysis solution, and binding and washing buffers with high concentration guanidinium thiocyanate (GuSCN, 50% w/v), which helps remove plant proteins, polysaccharides and polyphenolic compounds. The method was successfully used to extract high quality RNA from citrus (*Citrus aurantifolia*), grapevine (*Vitis vinifera*), peach (*Prunus persica*), pear (*Pyrus spp.*), taro (*Colocasia esculenta*) and tobacco (*Nicotiana benthamiana*) samples. The method was comparable to conventional CTAB method in RNA isolation efficiency, but it was more sample-adaptable and cost-effective than commercial kits. High quality RNA isolated using silica spin column-based method was successfully used for the RT-PCR and/or multiplex RT-PCR amplification of woody fruit tree viruses and a viroid. The study provided a useful tool for the detection and characterization of plant viruses.

1. Introduction

Reverse transcription polymerase chain reaction (RT-PCR) technique has been widely used for the identification, detection and molecular characterization of plant viruses due to its high specificity and sensitivity (Henson and French, 1993; Mumford et al., 2006). However, successful application of RT-PCR for the detection of plant RNA viruses requires efficient recovery of high quality RNA. The quality and quantity of RNA recovered is strongly influenced by the extraction methods and the plant species (MacKenzie et al., 1997). Woody fruit trees are economically important crops. Virus infection in fruit trees is very common and usually can decrease the tree growth. Virus detection is necessary for the production of certified virus-free propagation materials of fruit trees. The leaves and/or bark tissues of most fruit trees contain some amount of polysaccharides and polyphenolic compounds (Demeke and Adams, 1992; Gambino et al., 2008), which usually are difficult to be removed and inhibit reverse transcription and PCR reactions (Asif et al., 2000; Demeke and Adams, 1992; Jones and McGavin, 2002; Korschineck et al., 1991; Li et al., 2008; Loomis, 1974; Nassuth et al., 2000; Pandey et al., 1996; Salzman et al., 1999; Staub et al., 1995). Moreover, fruit tree viruses usually occur at low titers and

with uneven distribution in infected plants, their detection is difficult, which is also a challenge for high-quality RNA recovery.

For plant virus detection, different RNA extraction methods have been developed by using different denaturing organic solvents (phenol and chloroform), reducing agents (β -mercaptoethanol and dithiothreitol), or denaturing agents (guanidinium isothiocyanate salts) and different detergents, such as sodium dodecyl sulphate (SDS), cetyltrimethylammonium bromide (CTAB) or Sarcosyl (Chang et al., 1993; Chomczynski and Cincinnati, 2011; Gehrig et al., 2000; Iandolino et al., 2004; Li et al., 2008; Manning, 1990; Tattersall et al., 2005; Wang et al., 2008). TRIzol – and CTAB – based methods are most widely used in plant RNA extraction (Gambino et al., 2008; MacRae, 2007; Kansal et al., 2008; Kolosova et al., 2004; Zhou et al., 2009). However, TRIzol is not suitable for the isolation of high quality RNA from some woody plant species (e.g., peach, pear and grapevine) (Malnoy et al., 2001; Meisel et al., 2005; Tattersall et al., 2005). Recent research also found that TRIzol showed a bias in mRNA extraction from young tissues of arabidopsis plant (Box et al., 2011). To improve their efficiency for virus detection and suitability for specific plants, some of these methods have been modified (Gambino et al., 2008; Portillo et al., 2006; Kalinowska et al., 2012). It is noted that some of these improved

* Corresponding author at: State Key Laboratory of Agricultural Microbiology, Huazhong Agricultural University, Wuhan, Hubei 430070, China.
E-mail address: whni@mail.hzau.edu.cn (N. Hong).

methods have been mostly employed for individual crop (Gambino et al., 2008). RNeasy Plant Mini Kit (Qiagen, Valencia, CA, USA) is the most popular commercial kit for plant RNA extraction. The kit contains a column unit employed to reduce co-purification of polysaccharides or other substances which can interfere in RT-PCR reactions. The spin column-based protocol is convenient and safe, and does not employ toxic organic solvents. However, it is relatively expensive, in some cases, results in low yield and poor quality RNA for plants, which are rich in polyphenolic and polysaccharide compounds (Asif et al., 2000; Gasic et al., 2004; Gambino et al., 2008). Recently, magnetic particles based nucleic acid extraction methods have been reported being effective for different samples (Zhu et al., 2008; Intorasoot et al., 2009; Sun et al., 2014).

To meet requirement for production of certified virus-free propagation materials of fruit trees, it is important to develop a more universal, quick, and reliable RNA extraction method suitable for vast woody plant types. This paper reports the development of a simple, reliable, and rapid silica spin column-based method for RNA extraction from plant tissues in less than 1 h. The efficiency of this rapid protocol is compared with that of five other RNA extraction methods that were previously used for different plants. The suitability of extracted RNA for RT-PCR detection of viruses and a viroid infecting fruit trees is evaluated.

2. Materials and methods

2.1. Plant materials

Young leaf samples collected from tobacco (*Nicotiana benthamiana*), taro (*Colocasia esculenta*), citrus (*Citrus aurantifolia*), peach (*Prunus persica*), grapevine (*Vitis vinifera*) and pear (*Pyrus bretschneideri*) grown in a greenhouse were used to evaluate the efficiency of different RNA extraction protocols. Tobacco and taro represent herbaceous plant species with normal and high content of polysaccharides, respectively. Citrus, peach, grapevine and pear are worldwide grown woody fruit trees. Among these species, peach, grapevine and pear are rich in polysaccharides and polyphenolic compounds, which are relatively less in citrus.

Leaves collected from potted plants of pear infected by *Apple stem pitting virus* (ASPV), citrus infected by *Citrus exocortis viroid* (CEVd) and peach infected by *Cherry green ring mottle virus* (CGRMV), and stem bark tissues of grapevine infected by *Grapevine leaf roll associated virus 3* (GLRaV-3), and were used for virus detections by RT-PCR. *In vitro* cultured pear (*Pyrus communis*) plants were used for the multiplex RT-PCR (mRT-PCR) detection of *Apple stem grooving virus* (ASGV), *Apple chlorotic leaf spot virus* (ACLSV) and ASPV. The corresponding tissues of virus-free plants of each species were used as negative controls in RT-PCR and mRT-PCR tests.

All samples were collected immediately before being used for RNA extraction.

2.2. RNA extraction

Two silica spin column (SSC)-based RNA extraction methods were optimized and their efficiency were compared with that of five previously reported RNA extraction methods, including TRIzol (Invitrogen, USA), RNeasy plant kit (Qiagen, German), CTAB-LiCl, SDS-phenol and phenol precipitation. TRIzol and RNeasy Plant Mini Kit-based procedures were carried out as indicated in the manufacturer's handbook. CTAB-LiCl (Li et al., 2008), SDS-phenol (Gandía et al., 2007) and phenol precipitation (Chomczynski and Cincinnati, 2011) methods were performed as described previously. For each method, 0.1 g of each sample was powdered in liquid nitrogen and the resulted RNA extract was dissolved in a total of 70 μ l RNase-free water.

For silica spin column based RNA extraction methods, all the centrifuge steps were performed at room temperature. Buffer solutions

used in the protocols included sample lysis buffer, binding and washing buffers. For binding and washing buffers, initially three chaotropic salts, including guanidine thiocyanate (GuSCN), guanidine hydrochloride (GuHCl) and sodium iodide (NaI), were tested for their effects on the yield and quality of RNA. Then, the dosages of all inorganic salts were optimized. Silica columns were purchased from three manufacturers, including Sangon Co., Ltd (Shanghai, China), More Biotech (Wuhan, China) and Aidlab Biotechnologies Co., Ltd (Beijing, China). The optimized solutions and protocols for SSC-based RNA extraction methods were as follows.

(1) SSC-based protocol I (SSC-PI). The sample powdered in liquid nitrogen was quickly transferred into a tube and 700 μ l of lysis buffer [2% SDS (w/w), 4% PVP-40 (w/w), 0.5 M NaCl, 100 mM Tris-HCl (pH 8.0), 25 mM EDTA (pH 8.0), 12.5% β -mercaptoethanol] was added. After vigorous vortex, the sample was incubated at 65 °C for 10 min and centrifuged at 12000g for 5 min. Equal volume (700 μ l) of binding buffer [50% Guanidine thiocyanate (GuSCN) (w/w), 1.5 M KCl, 0.3 M NH₄Cl, 0.3 M KAcO (pH 5.5)] was added into the tube. The tube was immediately inverted for several times, and then was kept standing at room temperature for 2 min to let detergent be precipitated. After centrifugation at 12000g for 10 min, the supernatant was transfer to a new tube, and mixed with 0.5 vol of 100% ethanol. Next, the mixture was added into a silica spin column (Sangon, Shanghai, China. Catalogue number: SD5005) and centrifuged at 15000g for 1 min. The column was washed with 700 μ l wash buffer wash buffer [50% GuSCN (w/w), 1.5 M NaCl, 50 mM KAcO (pH 5.5), ethanol 37% (v/v)] for one time and with 700 μ l 80% ethanol (v/v) for two times. Then, the column was moved into a new tube, and 70 μ l RNase-free water pre-heated at 65 °C was directly loaded onto the silica membrane in the column. After standing at room temperature for 3 min to let RNA be dissolved in the water, and followed by centrifugation at 12000g for 1 min, the obtain RNA solution was stored at -80 °C until to be used.

(2) SSC-based protocol II (SSC-PII). SSC-PII was a simplified protocol from SSC-PI by omitting the lysis buffer at the first step, and the sample powder was directly transferred into a tube containing 700 μ l binding buffer.

It should be noted: (1) β -mercaptoethanol should be added into the lysis buffer just before it was used. (2) To avoid the reactions between GuSCN and other components, during the preparation of binding buffer and wash buffer, KAcO and ethanol should be added at last when the solution was completely cool to room temperature. (3) All reagents were prepared with DEPC-treated water.

2.3. Quantification and qualification of RNA

The quality and yield of obtained RNA extracts from different plant species was assessed by the spectrophotometric absorbance ratios of A260/A280 and A260/A230. RNA integrity was evaluated on 1.2% agarose gels stained with ethidium bromide.

2.4. Simplex and multiplex RT-PCR

First strand cDNA was synthesized by using 0.5 μ M of the reverse random primers (Takara, Dalian, China), M-MLV reverse transcriptase (Promega, Madison, USA) and 4 μ l RNA extract in a 10 μ l reaction solution at 37 °C for 1 h. Primers used for the detection of ASPV, CEVd, GLRaV-3 and CGRMV by simplex RT-PCR and the simultaneous detection of ASPV, ASGV and ACLSV of pear samples by multiplex RT-PCR were listed in Table 1. PCR reaction was performed using 2 μ l cDNA template, 0.1 mM of each dNTP, 0.2 μ M of each primer, one unit of *Taq* DNA polymerase (TaKaRa, Dalian, China), in a 20 μ l reaction solution. The thermal cycling condition consisted of initial denaturation at 94 °C for 3 min, 35 cycles of denaturation at 94 °C for 30 s, annealing for 30 s (the temperatures required were listed in

under UV illumination after being stained with ethidium bromide (0.5 µg/ml).

Multiplex RT-PCR test was carried out according our previously reported method (Yao et al., 2014). An actin gene (GenBank ID: CF837237) was used as an internal control.

3. Results

3.1. The comparison of RNA extraction efficiency by different protocols

Total RNA was extracted from the leaf samples of tobacco, citrus, pear, peach GF305 seedling, grapevine and taro using two silica spin column-based protocols, and other five methods, namely, CTAB-LiCl, SDS-phenol, phenol precipitation, and commercial TRIzol and RNeasy kits (Table 2). The silica spin column-based protocol I (SSC-PI), CTAB-LiCl and SDS-phenol methods successfully extracted RNA from all tested plant samples. It was noticed that in all tested samples, the RNA

Table 2Purity and yield (mean \pm SD) of total RNA extracted from leaves of tobacco, citrus, grapevine, peach, taro and pear plants by seven protocols.

Protocol	Time required	Source ^a	A260/A280	A260/A230	RNA yield ($\mu\text{g/g}$)
SSC-PI	45 min	tobacco	1.79 \pm 0.03	2.13 \pm 0.07	689 \pm 67.5
		citrus	1.83 \pm 0.04	2.47 \pm 0.06	994 \pm 102.4
		pear	2.08 \pm 0.03	1.65 \pm 0.09	485 \pm 50.4
		peach	1.98 \pm 0.05	1.62 \pm 0.04	697 \pm 68.7
		grapevine	1.88 \pm 0.06	1.69 \pm 0.05	783 \pm 82.4
		taro	1.9 \pm 0.04	1.57 \pm 0.08	210 \pm 30.7
CTAB-LiCl	4 h	tobacco	1.9 \pm 0.16	1.65 \pm 0.04	394.6 \pm 52.34
		citrus	1.85 \pm 0.18	1.44 \pm 0.06	185.3 \pm 41.3
		pear	1.81 \pm 0.08	1.32 \pm 0.04	129.5 \pm 49.3
		peach	1.76 \pm 0.11	2.24 \pm 0.03	358.2 \pm 62.6
		grapevine	1.72 \pm 0.07	2.60 \pm 0.05	760 \pm 101.3
		taro	1.87 \pm 0.13	2.00 \pm 0.04	218 \pm 55.4
SDS-phenol	3.5 h	tobacco	1.74 \pm 0.07	2.68 \pm 0.03	436.5 \pm 72.5
		citrus	1.76 \pm 0.09	2.69 \pm 0.05	1133.8 \pm 101.3
		pear	1.76 \pm 0.1	2.32 \pm 0.03	155.7 \pm 58.3
		peach	1.74 \pm 0.04	2.22 \pm 0.11	210 \pm 46.3
		grapevine	1.54 \pm 0.08	0.77 \pm 0.03	873.1 \pm 101.2
		taro	1.81 \pm 0.13		

viruses (Fig. 4C).

4. Discussion

The routine applications of RT-PCR techniques for the detection of plant RNA viruses largely depend on the isolation of sufficient and high-quality RNA preparations from a large number of samples in a short period. In this study, a highly reliable method (SSC-PI) for RNA preparation from woody fruit trees was developed. The method was based on the commercially available silica columns and the utilization of optimized RNA lysing and binding reagents. The optimized protocol had the advantage of RNeasy kit in that it avoided the use of organic solvents and phenol, and was rapid. Moreover, the yield and quality of RNAs from all tested samples was good and superior to RNeasy plant kit. RNA extracts from woody fruit trees were adequate for the applications in RT-PCR detection of viruses in these host plants. The efficiency of RNeasy kit for RNA extraction was highly affected by the conditions of samples. It failed in RNA recovery from pear and grapevine samples, which represented fruit tree species with difficulty for RNA extraction. The efficiency of silica spin column-based method SSC-PI was comparable with CTAB- and SDS-based methods, but more time and labor saving than that of the last two methods. Previously, silica capture of viral RNA and antibody-capture of virus particles were described to be effective for subsequent RT-PCR tests of some viruses and

viroids infecting fruit trees (Rott and Jelkmann, 2001; Sun et al., 2014; Wetzel et al., 1991). Silica capture was a fast method, but it was not effective for viral RNA isolation from grapevine tissues (Gambino et al., 2008). The protocol SSC-PI described here was based on commercially available column with silica conjugated into a membrane. Therefore, SSC-PI did not need to prepare the silica solution (Rott and Jelkmann, 2001) or to encapsulate magnetic particles (Sun et al., 2014) and provided a convenient tool for RNA extraction. On the other hand, the successful RNA extraction from tobacco and citrus samples with all tested methods, but the failure from other four species with one or more methods confirmed that the rich polysaccharides and polyphenols in pear, peach, grapevine and taro strongly interfered in the RNA extraction efficiency (Demeke and Adams, 1992; Gasic et al., 2004).

The oxidization products of polyphenol and quinine compounds can irreversibly bind to RNA (Loomis, 1974; Salzman et al., 1999), and polysaccharides can co-precipitate with RNA in the presence of ethanol, and subsequently inhibit enzymatic reaction in subsequent RT-PCR (Asif et al., 2000; Levi et al., 1992; Lopez-Gomez and Gomez-Lim, 1992; Schneiderbauer et al., 1991). To remove these substances from RNA solution, some modifications were adopted for conventional CTAB-based method and also for RNeasy kit. Additional extraction buffer or step before using the RNeasy kit increased the binding capacity of RNeasy columns by removing some contaminants, thus improved the efficiency of RNA isolation from grapevine tissues (Gambino et al.,

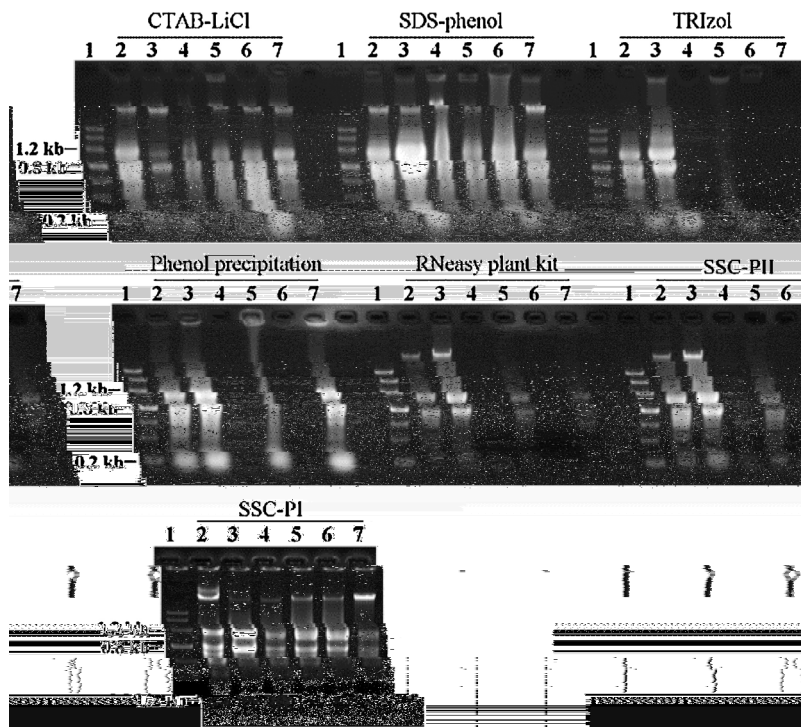


Fig. 1. Agarose gel electrophoresis of total RNA extracted by CTAB-LiCl, SDS-phenol, TRIzol, phenol precipitation, RNeasy plant kit and two silica spin column (SSC-PI and SSC-P II) based methods from tobacco (lane 2), citrus (lane 3), pear (lane 4), peach (lane 5), grapevine (lane 6) and taro (lane 7) samples. Lane 1: DNA marker.

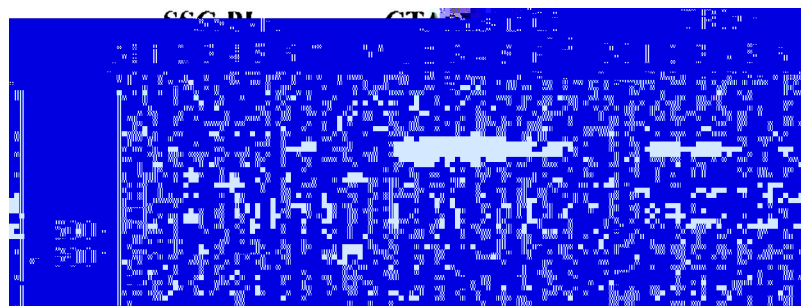


Fig. 2. Comparison of total RNA extracted by SSC-PI, CTAB-LiCl and TRIzol methods for the reverse transcription-polymerase chain reaction (RT-PCR) detection of *Grapevine leafroll-associated virus 3* (GLRaV-3) in bark tissues of seven grapevine plants. Lane M, DNA ladder; Lane 1 and lanes 4–7, GLRaV-3 infected grapevine plants; Lanes 2–3, healthy grapevine plants. The target band of GLRaV-3 was indicated by bold arrows.

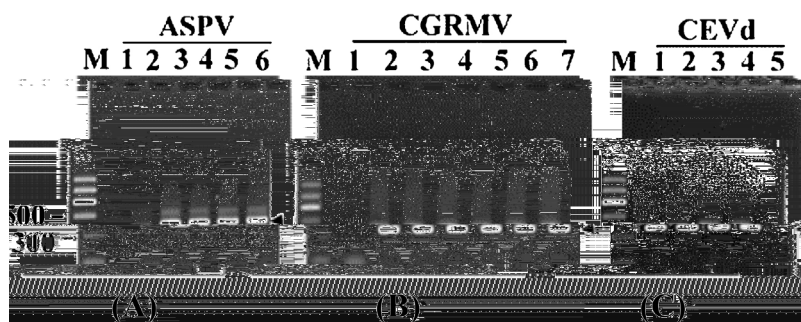


Fig. 3. Evaluation of total RNA extracted using the SSC-PI method for the reverse transcription-polymerase chain reaction (RT-PCR) detection of *Apple stem pitting virus* (ASPV) in pear (A), *Cherry green ring mottle virus* (CGRMV) in peach (B) and *Citrus exocortis viroid* (CEVd) in citrus (C) samples. Lanes A1, B1 and C5, healthy pear, peach and citrus samples used as negative controls. Target band of each virus or viroid was indicated by bold arrows. (For interpretation of the references to colour in this figure legend, the reader is referred to the web version of this article.)

2008; MacKenzie et al., 1997). In this study, the application of a tissue lysis solution containing 2% SDS (w/v) combined with 4% PVP-40 (w/v) in a Tris-HCl and EDTA buffer system (pH 8.0) was an important and indispensable step of the silica column-based method for enhancing the reproducibility of RNA extractions from diverse host species. The SDS and PVP removed most proteins, polysaccharides, polyphenolic compounds and other inhibitors from plant samples as indicated by high RNA quality and yield from grapevine and pear samples, which were highly rich in these compounds. The absent of the tissue lysis buffer in a similar silica column based protocol II (SSC-P II) resulted in very low yield and poor quality of RNA extracts from pear, grapevine and taro samples, suggesting that the existence of those inhibition compounds in tissue lysates could decrease the efficiency of RNA banding into silica

membrane in the spin columns. The application of high concentration GuSCN (w/v 50%) in subsequent binding and washing buffers also enhanced removing denatured proteins and other inhibitors. Notably, recent reports indicated that silica-coated magnetic particles was efficient for RNA or DNA extraction due to removing inhibitor from different samples (Zhu et al., 2008; Intorasoot et al., 2009; Sun et al., 2014). Whether it is comparable with SSC-PI needs further evaluation.

The successful amplification of CGRMV, GLRaV-3, ASPV and a viroid CEVd by using RNA extracts obtained with the SSC-PI indicated that the method was efficient in removing RNA inhibitors in these plants. The efficiency of SSC-PI applied in GLRaV-3 detection by RT-PCR and simultaneous detection of three pear viruses by mRT-PCR was comparable to that of CTAB-LiCl method (Li et al., 2008). Our result

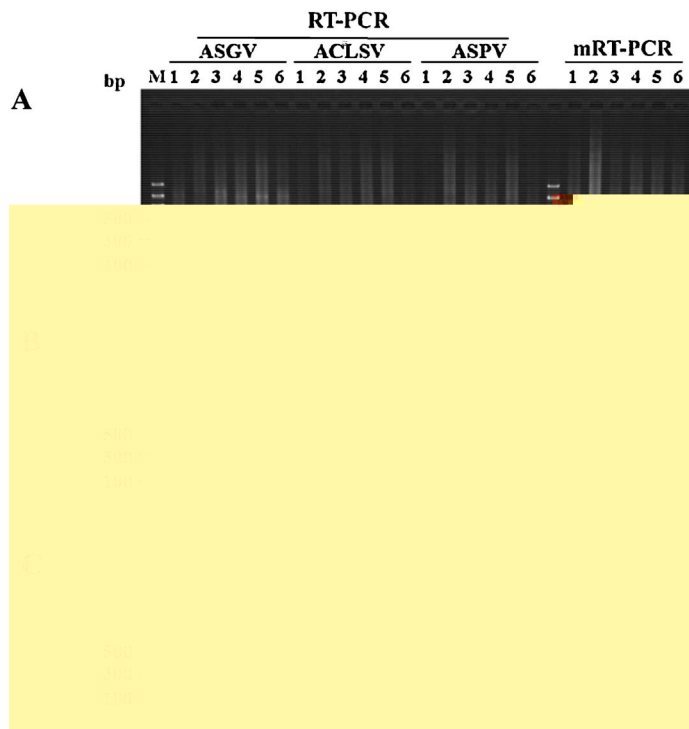


Fig. 4. Comparison of total RNA extracted by CTAB-LiCl (A), SSC-PI (B) and TRIzol (C) methods for the simplex and multiplex reverse transcription-polymerase chain reaction (RT-PCR) detection of ASPV, ASGV and ACLSV infecting *in vitro*-cultured pear plants. Lane M, DNA ladder; Lane 1 and lanes 3–6, ASPV, ASGV and ACLSV positive pear plants; Lane 2, healthy pear sample.

also confirmed that TRIzol reagent was not suitable for RNA isolation from grapevine and pear samples as indicated by very low A260/A280 and A260/A230 values and the failure in the RT-PCR detection of viruses (Malnoy et al., 2001; Meisel et al., 2005; Tattersall et al., 2005). Then, to resolve the problem, some modifications for the TRIzol procedure will be necessary to remove inhibitors as reported previously (Chomczynski and Mackey, 1995). Pear tissues contained considerable amounts of polysaccharides and polyphenolics (Malnoy et al., 2001; Wilson and Blunden, 1983), which made the isolation of high quality RNA from pear tissues particularly difficult and strongly interfered in the PCR amplification efficiency (Demeke and Adams, 1992; Pandey et al., 1996; Staub et al., 1995). SSC-PI produced high-yield and good-quality RNA extracts from pear leaf samples were suitable not only for the individual detection of ASPV, ASGV and ACLSV in pear plants by simplex RT-PCR, but also for the simultaneous high through-put detection of these viruses in pear samples by multiplex RT-PCR. SSC-PI method described here was suitable for dealing a large amount of samples in a limited period (less than one hour). The method has already been adopted for the routine RT-PCR or RT-LAMP detections and genome amplification of viruses and viroids in various fruit trees in our laboratories. In fact, the method reported here has been successfully used for RT-LAMP analysis of pear viruses in our lab. Additionally, the steady quality and quantity of RNA extracts obtained with SSC-PI allowed the consistent amplification of ASPV, CGRMV and CEVd in different samples suggested that the method should be applicable for further qPCR analysis.

In conclusion, this paper reports an optimized silica spin column-based RNA extraction protocol SSC-PI, which is fast and has good reliability and repeatability for the application in RT-PCR detection of viruses and viroids of different fruit tree species.

Acknowledgements

This work was financially supported by, Ministry of Agriculture of the People's Republic of China with the project nyhyzx-201203076-03 and the earmarked fund for Pear Modern Agro-industry Technology Research System nycyt-29-08, and National Natural Science Foundation of China with grant No. 31272145.

References

- Asif, M.H., Dhawan, P., Nath, P., 2000. A simple procedure for the isolation of high quality RNA from ripening banana fruit. *Plant Mol. Biol. Rep.* 18, 109–115.
- Box, M.S., Coustham, V., Dean, C., Mylne, J.S., 2011. A simple phenol-based method for 96-well extraction of high quality RNA from Arabidopsis. *Plant Methods* 7, 7.
- Chang, S., Puryear, J., Cairney, J., 1993. A simple and efficient method for isolating RNA from pine trees. *Plant Mol. Biol. Rep.* 11, 113–116.
- Chomczynski, P., Cincinatti, O., 2011. Reagents and methods for isolation of purified RNA. European patent application EP2322613A1.
- Chomczynski, P., Mackey, K., 1995. Modification of the TRI Reagent (TM) procedure for isolation of RNA from polysaccharide- and proteoglycan-rich sources. *Biotechniques* 19, 942–945.
- Demeke, T., Adams, R.P., 1992. The effect of plant polysaccharides and buffer additives on PCR. *Biotechniques* 12, 332–334.
- Gambino, G., Perrone, I., Griboudo, I., 2008. A rapid and effective method for RNA extraction from different tissues of grapevine and other woody plants. *Phytochem. Anal.* 19, 520–525.
- Gasic, K., Hernandez, A., Korban, S.S., 2004. RNA extraction from different apple tissues rich in polyphenols and polysaccharides for cDNA library construction. *Plant Mol. Biol. Rep.* 22, 437.
- Gehrig, H.H., Winter, K., Cushman, J., Borland, A., Taybi, T., 2000. An improved RNA isolation method for succulent plant species rich in polyphenols and polysaccharides. *Plant Mol. Biol. Rep.* 18, 369–376.
- Henson, J.M., French, R., 1993. The polymerase chain reaction and plant disease diagnosis. *Annu. Rev. Plant Pathol.* 31, 81–109.
- Iandolino, A.B., Silva, F.G., Lim, H., Choi, H., Williams, L.E., Cook, D.R., 2004. High-quality RNA, cDNA, and derived EST libraries from grapevine (*Vitis vinifera* L.). *Plant Mol. Biol. Rep.* 22, 269–278.
- Intorasoot, S., Srirung, R., Intorasoot, A., Ngamratanaipoon, S., 2009. Application of gelatin-coated magnetic particles for isolation of genomic DNA from bacterial cells. *Anal. Biochem.* 386, 291–292.
- Jones, A.T., McGavin, W.J., 2002. Improved PCR detection of Black currant reversion virus in ribes and further evidence that it is the causal agent of reversion disease. *Plant Dis.* 86, 1333–1338.
- Kalinowska, E., Chodorska, M., Paduch-Cichal, E., Mroczkowska, K., 2012. An improved method for RNA isolation from plants using commercial extraction kits. *Acta Biochim. Pol.* 59, 391–393.
- Kansal, R., Kuhar, K., Verma, I., Gupta, R.N., Gupta, V.K., Koundal, K.R., 2008. Improved and convenient method of RNA isolation from polyphenols and polysaccharide rich plant tissues. *Indian. J. Exp. Biol.* 46, 842–845.
- Kolosova, N., Miller, B., Ralph, S., Ellis, B.E., Douglas, C., Ritland, K., 2004. Isolation of high-quality RNA from gymnosperm and angiosperm trees. *Biotechniques* 36, 821–824.
- Korschineck, I., Himmler, G., Sagl, R., Steinkellner, H., Katinger, H.W.D., 1991. A PCR membrane spot assay for the detection of plum pox virus RNA in bark of infected trees. *J. Virol. Methods* 31, 139–146.
- Levi, A., Galau, G.A., Wetzstein, H.Y., 1992. A rapid procedure for the isolation of RNA from high-phenolic-containing tissues of pecan. *Hort. Sci.* 27, 1316–1318.

- Li, R., Mock, R., Huang, Q., Abad, J., Hartung, J., Kinard, G., 2008. A reliable and inexpensive method of nucleic acid extraction for the PCR-based detection of diverse plant pathogens. *J. Virol. Methods* 154, 48–55.
- Loomis, W.D., 1974. Overcoming problems of phenolics and quinones in the isolation of plant enzymes and organelles. *Meth. Enzymol.* 31, 528–545.
- Lopez-Gomez, R., Gomez-Lim, M.A., 1992. A method for extraction of intact RNA from fruits rich in polysaccharides using ripe mango mesocarp. *Hort. Sci.* 27, 440–442.
- MacKenzie, D.J., McLean, M.A., Mukerji, S., Green, M., 1997. Improved RNA extraction from woody plants for the detection of viral pathogens by reverse transcription-polymerase chain reaction. *Plant Dis.* 81, 222–226.
- MacRae, E., 2007. Extraction of plant RNA. *Methods Mol. Biol.* 353, 15–24.
- Malnoy, M., Reynoird, J.P., Mourgues, F., Chevreau, E., Simoneau, P., 2001. A method for isolating total RNA from pear leaves. *Plant Mol. Biol. Rep.* 19, 69.
- Manning, K., 1990. Isolation of nucleic acids from plants by differential solvent precipitation. *Anal. Biochem.* 195, 45–50.
- Meisel, L., Fonseca, B., González, S., Baezayates, R., Cambiazo, V., Campos, R., Gonzalez, M., Orelana, A., Retamales, J., Silva, H., 2005. A rapid and efficient method for purifying high quality total RNA from peaches (*Prunus persica*) for functional genomics analyses. *Biol. Res.* 38, 83–88.
- Mumford, R., Boonham, N., Tomlinson, J., Barker, I., 2006. Advances in molecular phytoagnostics—new solutions for old problems. *Eur. J. Plant Pathol.* 116, 1–19.
- Nassuth, A., Pollari, E., Helmezy, K., Stewart, S., Kofalvi, S.A., 2000. Improved RNA extraction and one-tube RT-PCR assay for simultaneous detection of control plant RNA plus several viruses in plant extracts. *J. Virol. Methods* 90, 37–49.
- Pandey, R.N., Adams, R.P., Flournoy, L.E., 1996. Inhibition of random amplified polymorphic DNAs (RAPDs) by plant polysaccharides. *Plant Mol. Biol. Rep.* 14, 17–22.
- Portillo, M., Fenoll, C., Escobar, C., 2006. Evaluation of different RNA extraction methods for small quantities of plant tissue: combined effects of reagent type and homogenization procedure on RNA quality, integrity and yield. *Physiol. Plant* 128, 1–7.
- Rott, M.E., Jelkmann, W., 2001. Characterization and detection of several filamentous viruses of cherry: adaptation of an alternative cloning method (DOP-PCR), and modification of an RNA extraction protocol. *Eur. J. Plant Pathol.* 107, 411–420.
- Salzman, R.A., Fujita, T., Zhu-Salzman, K., Hasegawa, P.M., Bressan, R.A., 1999. An improved RNA isolation method for plant tissues containing high levels of phenolic compounds or carbohydrates. *Plant Mol. Biol. Rep.* 17, 11–17.
- Schneiderbauer, A., Sandermann, H.J., Ernst, D., 1991. Isolation of functional RNA from plant tissues rich in phenolic compounds. *Anal. Biochem.* 197, 91–97.
- Staub, U., UPolivka, H., Gross, H.J., 1995. Two rapid microscale procedures for isolation of total RNA from leaves rich in polyphenols and polysaccharides: application for sensitive detection of grapevine viroids. *J. Virol. Methods* 52, 209–218.
- Sun, N., Deng, C., Zhao, X., Zhou, Q., Ge, G., Liu, Y., Yan, W., Xia, Q., 2014. Extraction of total nucleic acid based on silica-coated magnetic particles for RT-qPCR detection of plant RNA virus/viroid. *J. Virol. Methods* 196, 204–211.
- Tattersall, E.A.R., Ergul, A., Alkayal, F., Deluc, L., Cushman, J.C., Cramer, G.R., 2005. Comparison of methods for isolating high-quality RNA from leaves of grapevine. *Am. J. Enol. Vitic.* 56, 400–406.
- Wang, X., Tian, W., Li, Y., 2008. Development of an efficient protocol of RNA isolation from recalcitrant tree tissues. *Mol. Biotechnol.* 38, 57–64.
- Wetzel, T., Candresse, T., Ravelonandro, M., Dunez, J., 1991. A polymerase chain reaction adapted to plum pox potyvirus detection. *J. Virol. Methods* 33, 355–366.
- Wilson, M.F., Blunden, C.A., 1983. Changes in the levels of polyphenolics in tree pear varieties during bud development. *J. Sci. Food Agric.* 34, 973–978.
- Yao, B., Wang, G., Ma, X., Liu, W., Tang, H., Zhu, H., Hong, N., 2014. Simultaneous detection and differentiation of three viruses in pear plants by a multiplex RT-PCR. *J. Virol. Methods* 196, 113–119.
- Zhou, W., Gong, Y., Feng, Q., Gao, F., 2009. An improved method of isolation of high quality total RNA from purple-fleshed sweet potato *Ipomoea batatas* (L.) Lam. *Prep. Biochem. Biotechnol.* 39, 95–104.
- Zhu, L.Z., Yu, P.G., Shen, H.B., Jia, N.Q., Long, D.H., Zhou, H.Q., 2008. Extraction and detection of mRNA from a single K562 cell based on the functionalized super-paramagnetic nanoparticles. *Chin. J. Chem.* 26, 1041–1044.